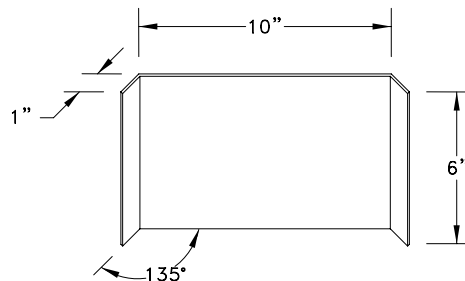
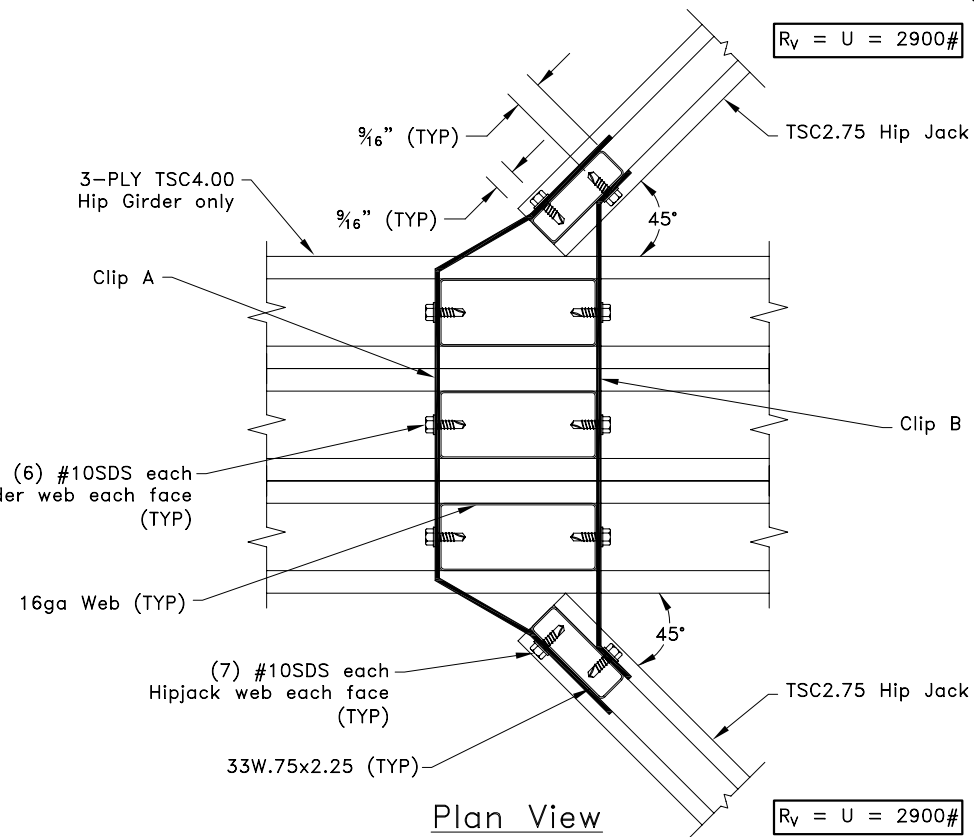


Clip A  
12g ASTM A653 SS Grade 33 G60  
Bare Metal Thickness:  $t = 0.0966$ "



Clip B  
12g ASTM A653 SS Grade 33 G60  
Bare Metal Thickness:  $t = 0.0966$ "



#### General Notes:

1. SDS = self-drilling tapping screw
2. All edge distances, end distances, and spacings are  $\frac{1}{16}$ " minimum.
3. Truss must be analyzed with concentrated loads directly in line with correctly placed girder vertical webs.
4. For clips connecting to a Z-Web vertical refer to TS068 for connection area.
5.  $R_v$  refers to vertical reaction, and  $U$  refers to uplift.
6. ● = Clip Bend; Bend clip only once.
7. Cold-Formed Steel calculations are per the 2010 supplement to the AISI 2007 "North American Specification for the Design of Cold-Formed Steel Structural Members" (S100-07/S2-10).

**TrusSteel®**  
An ITW Company

[www.TrusSteel.com](http://www.TrusSteel.com)

Florida: 1950 Marley Drive / Haines City, FL 33844 / (800) 755-6001  
Missouri: 13389 Lakefront Drive / Earth City, MO 63045 / (800) 326-4102  
California: 8351 Rovana Circle / Sacramento, CA 95828 / (800) 877-3678

## 45° 3-Ply Hip Girder Truss-To-Truss Connection

ITW Building Components Group, Inc. shall not be responsible for any performance failure in a connection due to a deviation from this detail. Any variation from this detail shall be approved in advance by ITW Building Components Group, Inc.

**Custom Detail:**  
TS-CD-TT-4505-005

**Date:**  
04/15/11

**Custom Detail Category:**  
Truss-to-Truss Connection